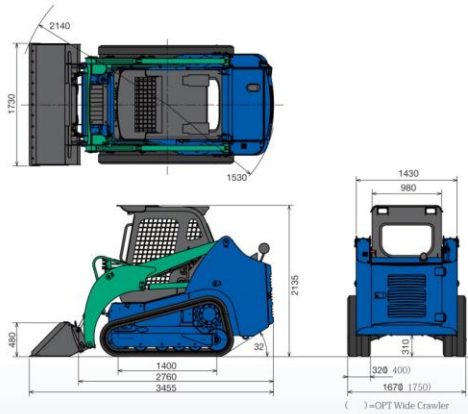
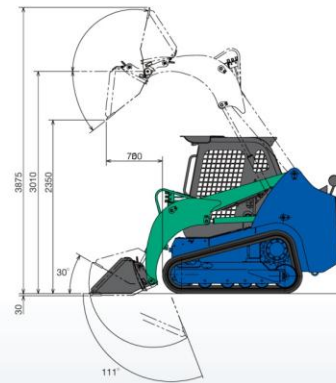


Dimensions (Unit: mm)



Working Range (Unit: mm)



CL35

Compact Track Loader
Operating Weight : 3550kg

CL35 Specifications

| | CL35 |
|---|---|
| ■ Performance | |
| Bucket Capacity SAE Heaped | 0.36 m ³ |
| Bucket Width | 1730 mm |
| Operating Weight | 3550 kg |
| Transportation Weight | 3475 kg |
| Travel Speed (Low) | 6.7 km/h |
| Travel Speed (High) | 10 km/h |
| Gradeability | 58% (30°) |
| Tipping Capacity SAE 732 | 2230 kg |
| Rated Operating Capacity* 35% Tip Load | 780 kg |
| Operation Capacity* 50% Tip Load | 1115 kg |
| Ground Bearing Pressure (400mm Crawler) | 38.9 kPa (31.4kPa) |
| Bucket Digging Force | 28.6 kN |
| ■ Engine | |
| Model | Yanmar 4TNV98 |
| Rated Output | 49.0kW (66.7PS) / 2400min ⁻¹ |
| Displacement | 3.318 L |
| Fuel Tank Capacity | 91 L |
| ■ Hydraulic System | |
| System Pressure | 20.6 MPa |
| Hydraulic Tank Capacity | 40 L |
| Auxiliary Flow | 66.7 L/min |

*SAE J818

Options

| |
|----------------------------|
| 400mm Width Rubber Crawler |
| ROPS Cabin |
| Air Conditioner |
| Throttle Pedal |

1 Comfortable Operation



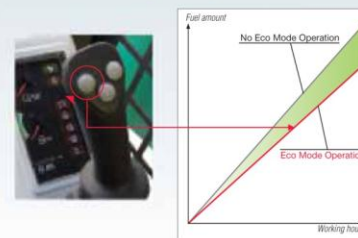
2 Precision Movement



3 Easy Maintenance



4 Eco-friendly Design



Additional Features

- The eco-friendly engine passes all EPA Interim Tier 4/ EC Stage 3A emission control regulations and offers low-noise operation.
- Large capacity 91-liter fuel tank is equipped for longer hours of operation and less downtime for refueling.
- Use of a hydraulic joystick lever smoothes out travel and attachment operations, contributing to reduced fatigue.
- Various attachments can be installed easily by lever-type quick attachments.
- The tilt-up canopy simplifies maintenance. Tilt-up can be done simply by removing 4 bolts. Since the tilt angle is a wide 70°, it provides ample accessibility for maintenance work.
- Special heavy-duty welding structure has been adopted for the main frame. Tough arm constructed with due consideration to heavy workloads.
- Rubber crawler with its rubber-covered inner running surface reduces roller wear. Since the roller and core metal do not contact directly, driving vibration and noise are minimized.